



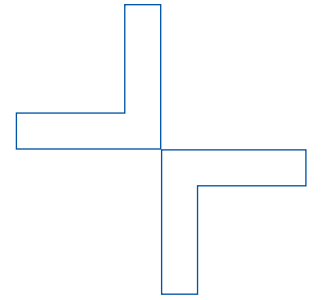
Te Puna Rangahau

UniServices Strategic Plan
2021-2025

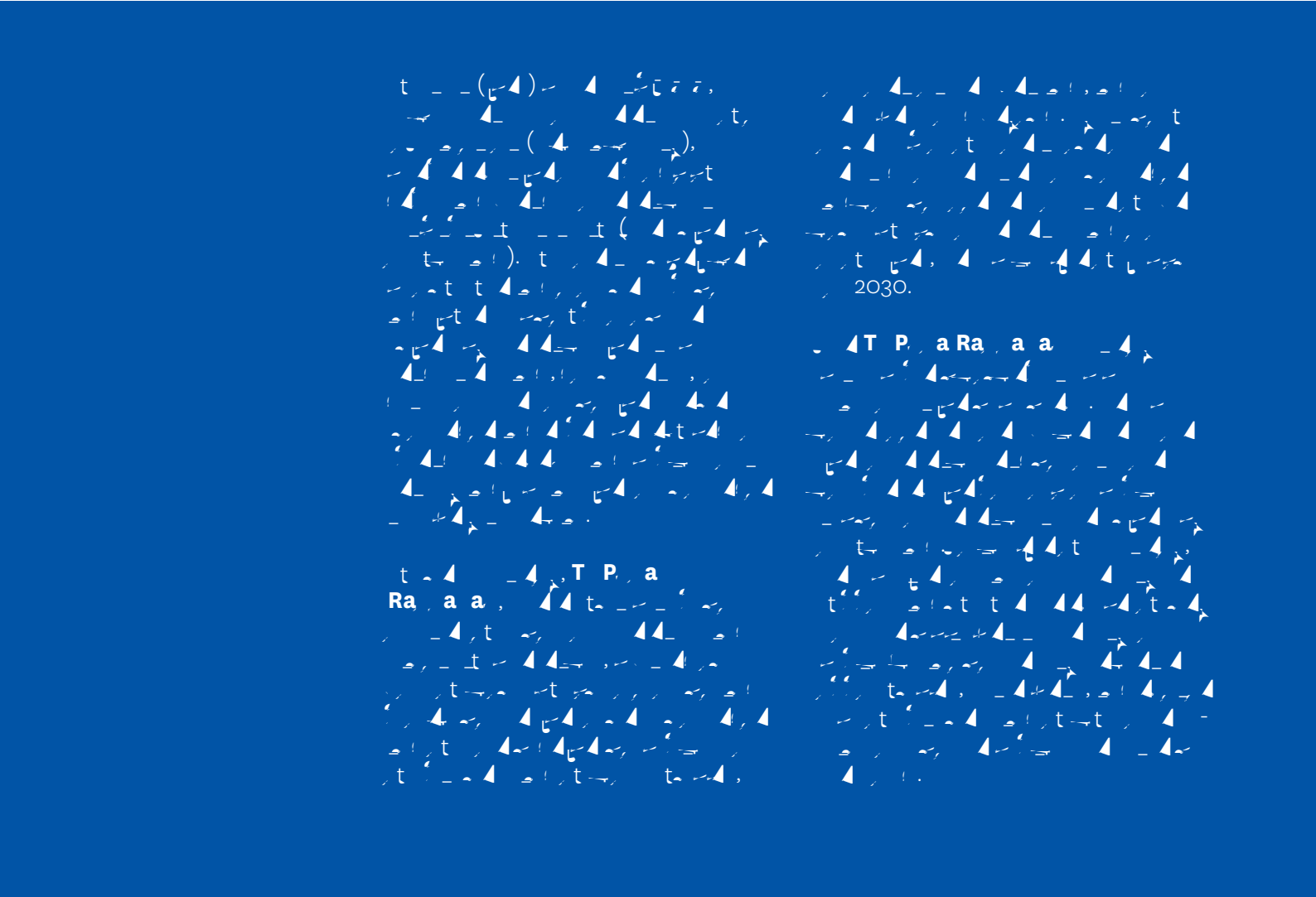


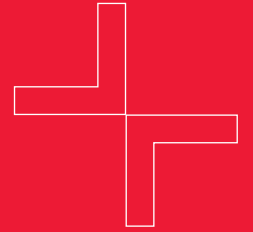


Te Puna Rangahau



**Like a spring rising from the earth to
nourish the land, our strategy is to turn the
ever-flowing stream of research at the
University of Auckland into knowledge
& impact - bringing Ideas to Life.**





Our values: The way we work

W a e d a U S e c e d e d b
a e a d e a e

W a a a a



Ma a a a



P a a a



Ka a a a





Our 2030 Vision

**Global, sustainable impact
from transdisciplinary,
integrated research
& innovation in**

2021-2025 Te P na
Rangaha Ta mata Teitei,
Rangaha Te P na



Our 2030 Vision

Għall-**a**bb~~o~~m **a**c
f m **a** d c ~~a~~ ,
e a ed e ea c a d
a **A** ea a

I 2030, **cc** a **a** d
d **a** c **ac**

Vision 2030:

What will we look like in 2030?

We will be a more advanced and
wealthy nation.

Our economy will be more
competitive and we will be
a more developed nation.

We will be a more advanced
economy and a more developed
nation.



Enabling transdisciplinary impact through our unique position

Academic excellence, research and
innovation at the University of
Exeter. We are a leading
university in the UK and
internationally. Our research
focuses on a wide range of
subjects, from the arts and
social sciences to engineering
and medicine. We are committed
to excellence in teaching and
learning, and to making a
positive impact on society.

Our research is supported by
the UK Research and Innovation
programme, which is the largest
source of funding for research
in the UK. We are also a member
of the Russell Group of
universities, which is a group of
leading research-intensive
universities in the UK.

Our research is also supported by
the Wellcome Trust, which is a
major funder of medical research
in the UK. We are also a member
of the University of Exeter
Research Partnership, which is a
partnership between the University
of Exeter and other leading
universities in the UK.

Our research is also supported by
the Wellcome Trust, which is a
major funder of medical research
in the UK. We are also a member
of the University of Exeter
Research Partnership, which is a
partnership between the University
of Exeter and other leading
universities in the UK.

Our research is also supported by
the Wellcome Trust, which is a
major funder of medical research
in the UK. We are also a member
of the University of Exeter
Research Partnership, which is a
partnership between the University
of Exeter and other leading
universities in the UK.

W a a
 c d a a a
 c
 d a d a c - a d
 c a a
 a - a c c a .

t (-)
 t
 21

Priority 1

De e d , e a ed
am e f e ea c , a a d



Alignment with the University of Auckland's Strategic Plan 2021-2025

T e U S e c e a e T P a R a a a m n a e
c b e e U e a e T e U e
Taumata Teitei V 2030 a d S a e c P 2025 e
m a e a c a n a c b f m
U S e c e e e a e a e e e e e e a e d
e f e c



F b d a b
ac - ac a
c ca a adb d
a a , U S c
c b c a , d a d

The U.S. Census Bureau's 2030 projections indicate that the number of people aged 65 and older will increase significantly over the next few decades:

- Working-age population will decline.
- Life expectancy at birth will increase.

The Social Security Administration's (SSA) 2021-2025 projections indicate that the U.S. Social Security Program will face significant challenges:

University Priority 1

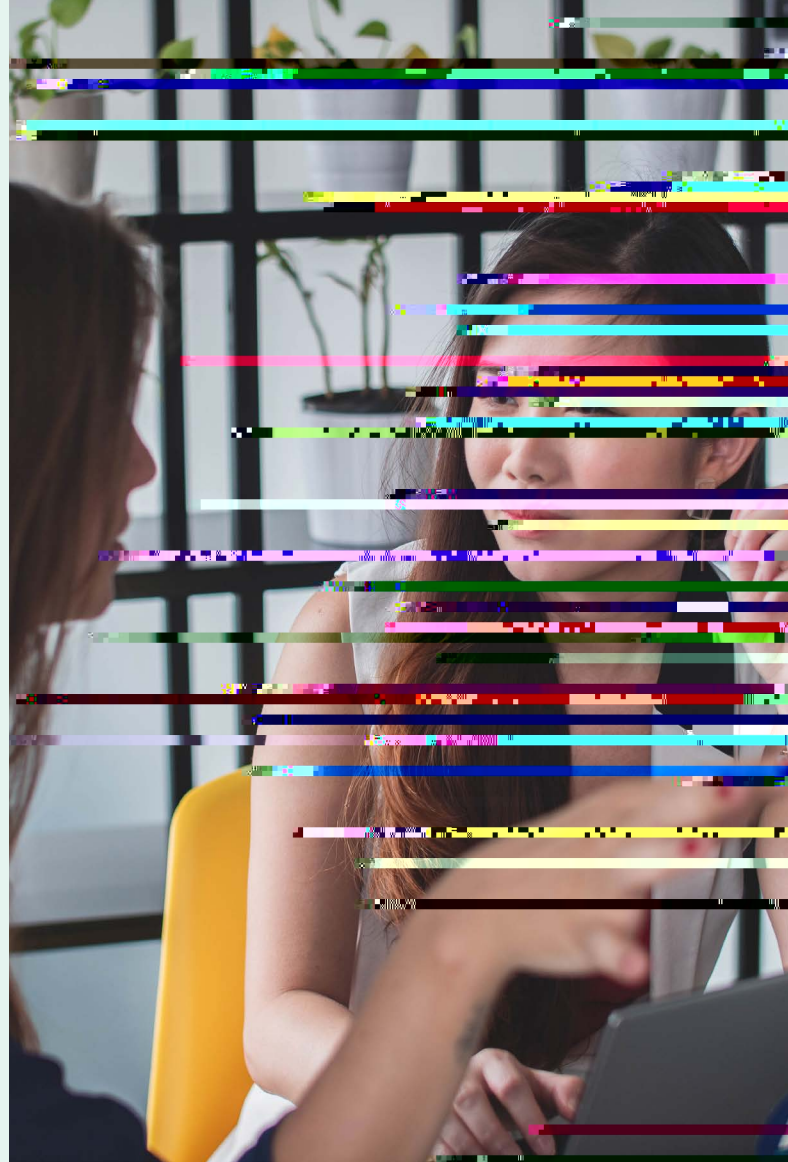
Learn to read and write

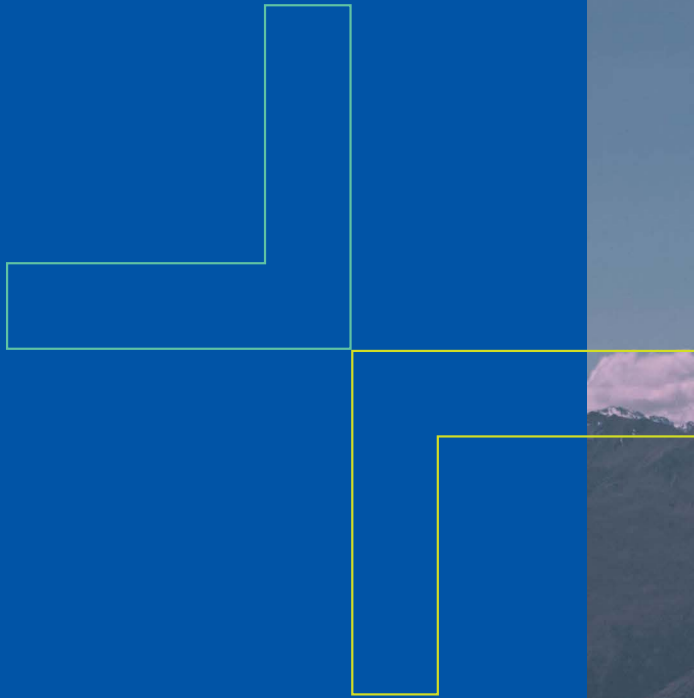
- Develop a strong foundation in reading and writing skills.
- Apply reading and writing skills to various contexts and genres.
- Analyze and evaluate texts for purpose, audience, and style.

University Priority 2

Develop effective communication

- Develop effective communication skills for various contexts and audiences.
- Apply communication skills to professional and academic settings.
- Analyze and evaluate communication for purpose, audience, and style.





Enabling Environment

Local Councils, Universities, and the State are working together to create an enabling environment for the private sector. This involves providing technical assistance, training, and access to markets. The goal is to support the growth of small and medium-sized enterprises (SMEs) and to create jobs. This is a key priority for the government and the private sector.

University Priority 5

Academic excellence, research, and innovation are the pillars of a strong university. This involves providing high-quality education, conducting research, and promoting innovation. The goal is to create a world-class university that is a leader in its field.

- Provide technical assistance and training to SMEs.
- Support access to markets and financing for SMEs.
- Promote innovation and entrepreneurship among students and faculty.

